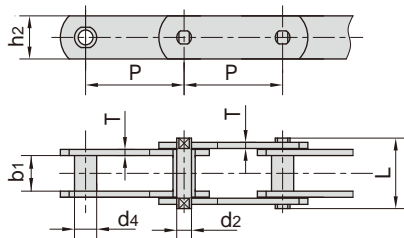


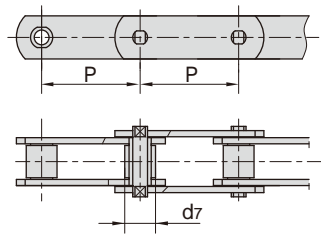
不锈钢输送链 (M系列)

Stainless steel conveyor chains (M series)

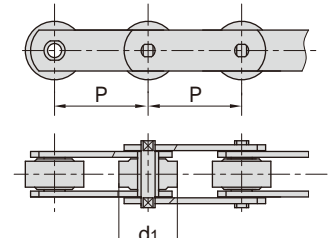
1. 无滚子
1. without rollers



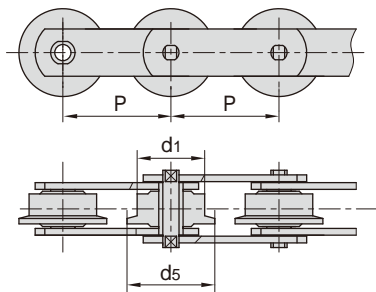
2. 带S型小滚子
2. with S small rollers type



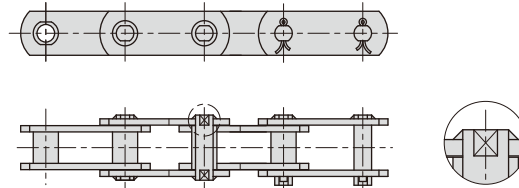
3. 带P型大滚子
3. with P large rollers type



4. 带F型带边滚子
4. with F flanged rollers type



5. 销轴铆头后采用焊接加固
5. Welded pins with plates



东华链号 Donghua Chain No.	节距 Pitch								滚子直径 Roller diameter			套筒直径 Bush diameter
	P								d1 max	d7 max	d5 max	d4 max
	mm								mm	mm	mm	mm
M20SS	40.0	50.0	63.0	80.0	100.0	125.0	160.0	25.00	12.50	30.00	9.00	
M28SS	50.0	63.0	80.0	100.0	125.0	160.0	-	30.00	15.00	36.00	10.00	
M40SS	63.0	80.0	100.0	125.0	160.0	-	-	36.00	18.00	42.00	12.50	
M56SS	63.0	80.0	100.0	125.0	160.0	-	-	42.00	21.00	50.00	15.00	
M80SS	80.0	100.0	125.0	160.0	-	-	-	50.00	25.00	60.00	18.00	
M112SS	80.0	100.0	125.0	160.0	-	-	-	60.00	30.00	70.00	21.00	
M160SS	100.0	125.0	160.0	-	-	-	-	70.00	36.00	85.00	25.00	

东华链号 Donghua Chain No.	内节内宽 Width between inner plates	销轴直径 Pin diameter	销轴长度 Pin length	链板高度 Plate depth	链板厚度 Plate thickness	抗拉强度 Tensile strength
	b1 min mm	d2 max mm	L max mm	h2 max mm	t/T max mm	Q min kN/lbf
M20SS	16.00	6.00	35.00	18.00	2.50	20.0/4545
M28SS	18.00	7.00	40.00	20.00	3.00	28.0/6364
M40SS	20.00	8.50	45.00	25.00	3.50	40.0/9091
M56SS	24.00	10.00	52.00	30.00	4.00	56.0/12727
M80SS	28.00	12.00	62.00	35.00	5.00	80.0/18182
M112SS	32.00	15.00	73.00	40.00	6.00	112.0/25454
M160SS	37.00	18.00	85.00	50.00	7.00	160.0/36364